

MONTHLY MEMBERSHIP PROGRESS REPORT

District 5M 3

Results as of: 6/30/2020

GMT:

LOCATION MINNESOTA

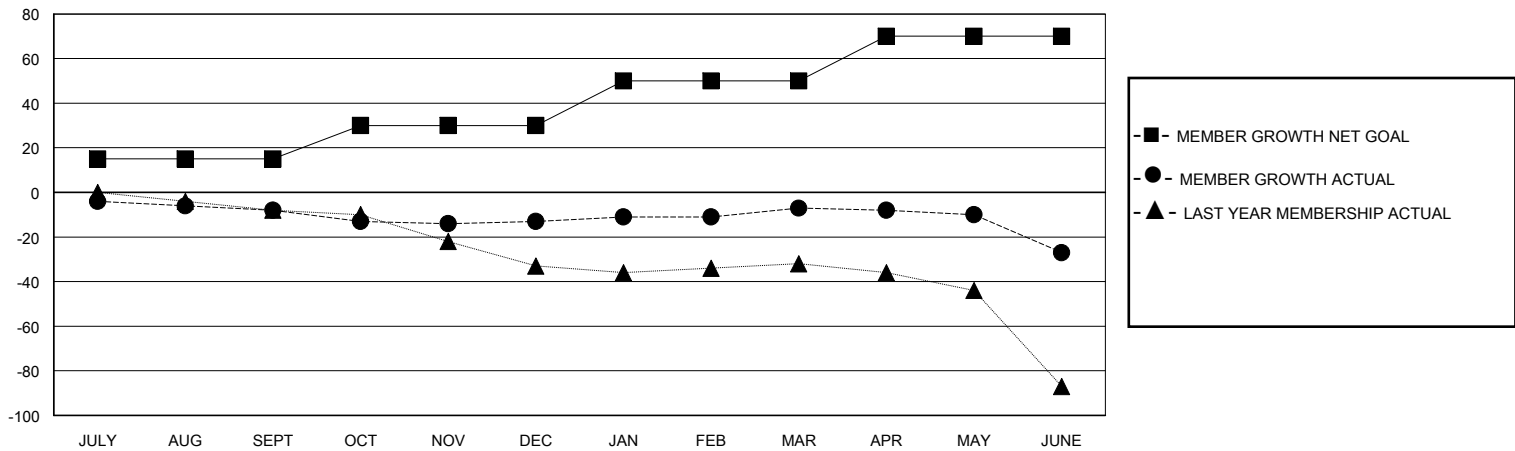
GMT CA

| Clubs | | | | Members | | | |
|-----------------------|---------------|-----------|---------------|-----------------------|------------------------|----------------------|--|
| RESULTS FOR 2019-2020 | | | | RESULTS FOR 2019-2020 | | | |
| QUARTER | NEW CLUB GOAL | NEW CLUBS | DROPPED CLUBS | QUARTER | MEMBER GROWTH NET GOAL | MEMBER GROWTH ACTUAL | DROPPED MEMBERS ACTUAL (including transfers) |
| JULY/AUG/SEPT | 0 | 0 | 1 | JULY/AUG/SEPT | 15 | 15 | 18 |
| OCT/NOV/DEC | 0 | 0 | 0 | OCT/NOV/DEC | 15 | 17 | 22 |
| JAN/FEB/MAR | 0 | 0 | 0 | JAN/FEB/MAR | 20 | 19 | 12 |
| APR/MAY/JUNE | 0 | 0 | 0 | APR/MAY/JUNE | 20 | 7 | 27 |

GOALS AND ACTUAL NEW CLUBS CUMULATIVE



GOALS AND ACTUAL MEMBERS CUMULATIVE



| | | |
|-------------------------|---|------------------------------------|
| DROPPED CLUBS: 1 | 26 CLUBS OF 39 ADDED 1 OR MORE NEW MEMBERS | GENDER DISTRIBUTION |
| DROPPED MEMBERS | CLICK HERE FOR CUMULATIVE MEMBERSHIP DATA | MALE 861 (77.36%) |
| DECEASED 20 | | FEMALE 252 (22.64%) |
| CLUB CANCELLED 0 | | TOTAL FAMILY UNIT MEMBERS 180 |
| OTHER 59 | | FAMILY MEMBERS PAYING HALF DUES 90 |
| TOTAL 79 | | |